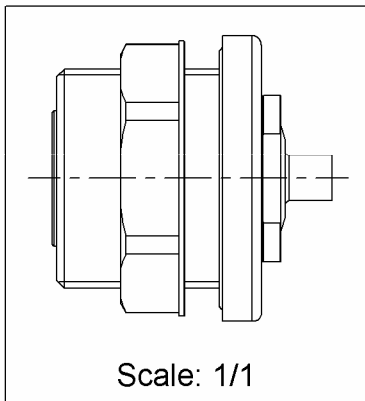
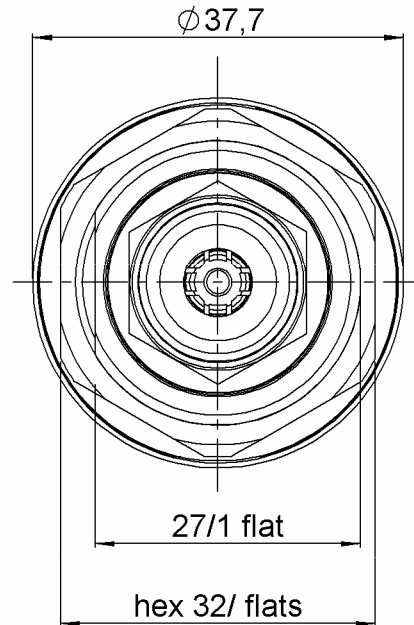
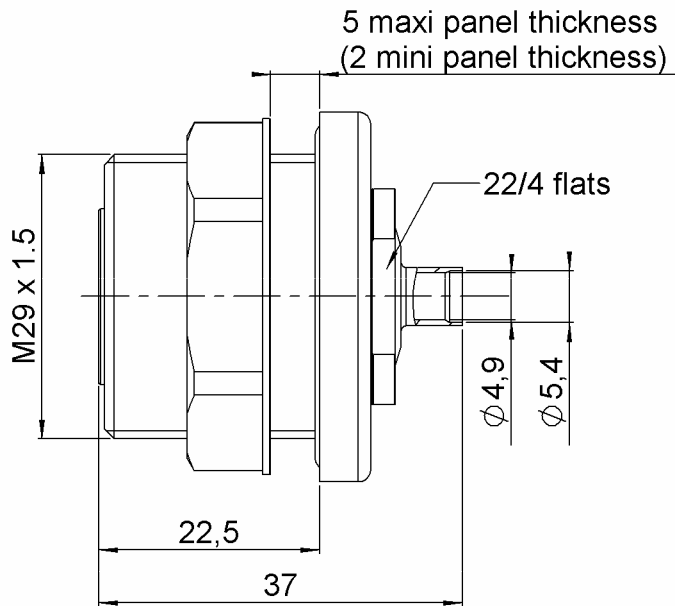


STRAIGHT BULKHEAD JACK PANNEL SEAL

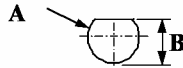
R187.110.020

SOLDER TYPE CABLE SHF5LI

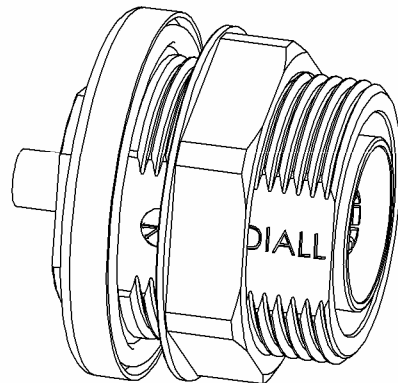
Series : 7/16
COMPOSITE



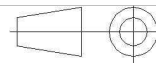
PANEL CUT OUT



| mm | | |
|----------|------|------|
| | Maxi | mini |
| A | 29.4 | 29.2 |
| B | 27.5 | 27.3 |



All dimensions are in mm.



| COMPONENTS | MATERIALS | PLATING (µm) |
|----------------|----------------------------|--------------------------|
| BODY | COMPOSITE MATERIAL - BLACK | - |
| CENTER CONTACT | BRONZE | SILVER 5 OVER COPPER 0.5 |
| OUTER CONTACT | BRASS | BBR 0.5 OVER SILVER 3 |
| INSULATOR | PTFE | |
| GASKET | ETHYLENE PROPYLENE | |
| OTHERS PARTS | BRASS | BBR 0.5 OVER SILVER 3 |
| SOLDER SLEEVE | BRASS | SILVER 5 OVER COPPER 0.5 |
| - | - | - |

Issue : 0942 A

In the effort to improve our products, we reserve the right to make changes judged to be necessary.



STRAIGHT BULKHEAD JACK PANNEL SEAL

R187.110.020

SOLDER TYPE CABLE SHF5LI

Series : 7/16
COMPOSITE

PACKAGING

| Standard | Unit | Other |
|-----------|-------------------|-------------------|
| 20 | 'W' option | Contact us |

SPECIFICATION

ELECTRICAL CHARACTERISTICS

| | | |
|---------------------------------|-----------------------|--------------------------|
| Impedance | 50 | Ω |
| Frequency | 0-7.5 | GHz |
| VSWR | *1.10 + 0,0000 | x F(GHz) Maxi |
| Insertion loss | 0.05 | \sqrt{F} (GHz) dB Maxi |
| RF leakage | - (NA) | - F(GHz)) dB Maxi |
| Voltage rating | 500 | Veff Maxi |
| Dielectric withstanding voltage | 1500 | Veff mini |
| Insulation resistance | 10000 | M Ω mini |

CABLE ASSEMBLY

| Stripping | a | b | c | d | e | f |
|-----------|------|------|------|------|------|------|
| mm | 12,5 | 7,00 | 19,5 | 0,00 | 0,00 | 0,00 |

Assembly instruction :

Recommended cable(s)
SHF5LI VERT

Characteristics indicated on this data sheet are those that can be achieved with the highest performance cable. Intrinsic limitations of the cable may diminish the performance of the assembly

Cable retention

- pull off **90** N mini
- torque **NA** N.cm

MECHANICAL CHARACTERISTICS

| | | |
|----------------------------|------------|-----------|
| Center contact retention | | |
| Axial force – Mating end | 200 | N mini |
| Axial force – Opposite end | 100 | N mini |
| Torque | | N.cm mini |

TOOLING

| Part Number | Description | Hexagon |
|--------------|-----------------------|---------|
| R282.868.270 | ADAPTER SCREWING TOOL | |

| | | |
|--------------------|----------------|------|
| Recommended torque | | |
| Mating | 2000 | N.cm |
| Panel nut | 2000 | N.cm |
| Clamp nut | 900 | N.cm |
| A/F clamp nut | 22,0000 | mm |

OTHER CHARACTERISTICS

- *VSWR : DC - 3GHz
- **PIM3 : -110dBm(2 carries of +43dB
- Crimp the panel nut all the 5 matings

| | | |
|------------------------------|----------------|-------------|
| Mating life (with composite) | 50 | Cycles mini |
| Mating life (with brass) | 100 | Cycles mini |
| Weight | 75,9200 | g |

ENVIRONMENTAL

| | | |
|-----------------------|----------------|--------------|
| Operating temperature | -40/+85 | $^{\circ}$ C |
| Hermetic seal | | Atm.cm3/s |
| Panel leakage | IP67 | |

Issue : 0942 A

In the effort to improve our products, we reserve the right to make changes judged to be necessary.



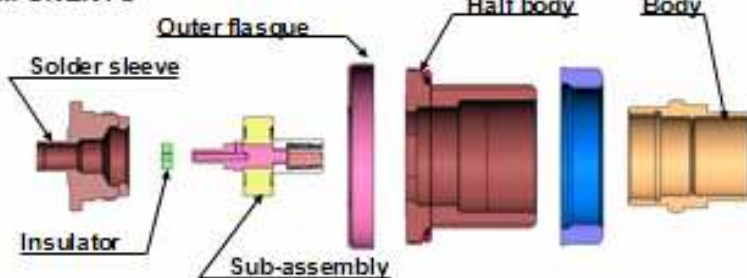
STRAIGHT BULKHEAD JACK PANNEL SEAL

R187.110.020

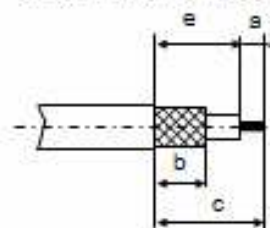
Series : 7/16
COMPOSITE

SOLDER TYPE CABLE SHF5LI

COMPONENTS



STRIPPING DIMENSIONS



1
Strip the cable.

4
Solder the contact.

2
Slide the insulator over the inner conductor until it bottoms against cable dielectric.

5
Solder the braid

3
Slide the sub assembly (center contact+insulator) on until it bottoms against the front of solder sleeve.

6
Mount the flasque the outer body and screw the body into the rear connector with the tool (see connector TDS). Recommended coupling torque (see connector TDS).

Issue : 0942 A

In the effort to improve our products, we reserve the right to make changes judged to be necessary.

